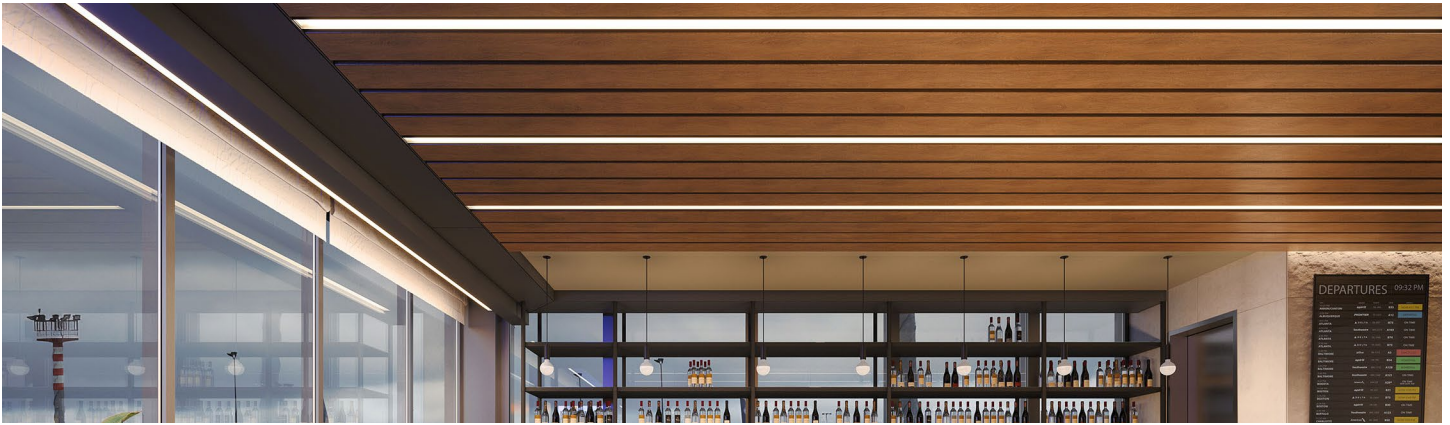




LIGHTPLANE+ 4R

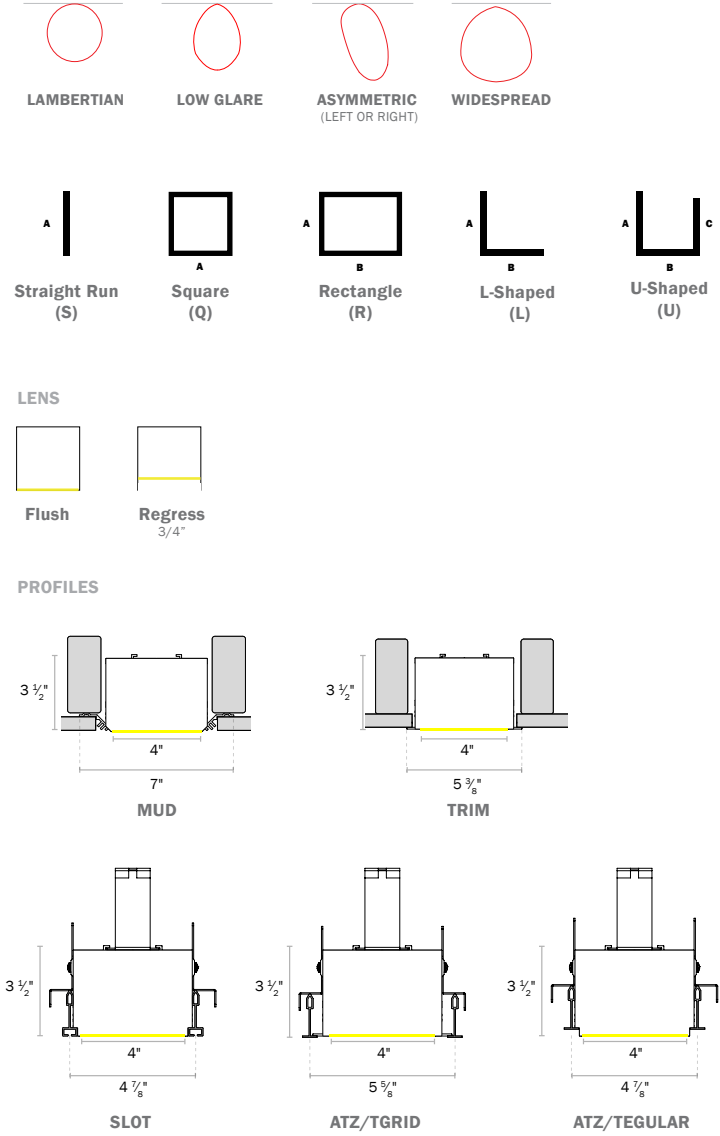
LPX4R | RECESSED



SPECIFICATIONS

| | |
|--------------------------|---|
| PROFILE | 4" Aperture, 3 1/2" height |
| SIZES | Individual/Straight Run sections starting at 2ft. Continuous runs & shapes |
| LED OUTPUT | Linear: 350lm/ft - 1,500lm/ft, up to 169 lm/W Downlights: 350 - 1,000lm per unit, up to 153 lm/W |
| CCT/CRI | 2700K/3000K/3500K/4000K/5000K • 80 or 90+ CRI Tunable White (2700K - 6500K) • RGB and RGB+W |
| DIMMING/DRIVER | Integral and Remote Driver: 0-10V, Phase, DALI, DMX, eldoLED, Lutron®, PoE (Molex, NuLEDs, WTEC Smartengine). Dimming to 0% for select models |
| EMBEDDED CONTROLS | Acuity nLight, Avi-on, Casambi, Cooper Wavelinx, Encelium, Enlighted, Lutron Athena, Lutron Vive, NX Controls, Wattstopper, and more |
| POWER | Linear: 3W - 11W per ft Downlights: 3.8 - 6.5W per unit |
| INPUT | 120VAC, 277VAC, or 347VAC |
| OPTICS | Linear: Lambertian, Low Glare (UGR < 16), Asymmetric ControlRoll, Widespread ControlRoll Downlights: 25° and 40° beam shaping optics |
| LENS | Standard Snap-in & ControlRoll Flush • Regressed |
| FINISHES | 16 powder coat finishes - Custom finishes also available |
| MATERIAL | 6063-T6 Extruded Aluminum, See Declare listing here |
| ENVIRONMENT | Dry or damp locations |
| WARRANTY | 11 years |
| WELL/UGR | See ALW WELL and BIOS pages for recommended options that contribute to meeting the WELL Building Standard™ |

DISTRIBUTIONS & PROFILES



Not to scale. Dimensions are nominal. Consult factory for CAD drawing





PRODUCT SPECIFICATION SHEET

| | | | | | | | | | | | | | | | | | | | | | | | | |
|---|---|---|---|---|---|---|---|---|----|----|----|----|----|----|----|----|----|----|----|----|----|----|----|----|
| 1 | 2 | 3 | 4 | 5 | 6 | 7 | 8 | 9 | 10 | 11 | 12 | 13 | 14 | 15 | 16 | 17 | 18 | 19 | 20 | 21 | 22 | 23 | 24 | 25 |
|---|---|---|---|---|---|---|---|---|----|----|----|----|----|----|----|----|----|----|----|----|----|----|----|----|

EXAMPLE: LPX4RMDFN – S8 – 053090SLV00 – D35359025HL/3V00 – SW – UNV – EMC/2 – N – N – DC – QS

| 1. FAMILY | 2. SIZE | 3. MODEL (CHOOSE 1) | 4. MOUNTING (CHOOSE 1) | 5. LENS TYPE (CHOOSE 1) |
|-----------|---------|---------------------|------------------------|-------------------------|
|-----------|---------|---------------------|------------------------|-------------------------|

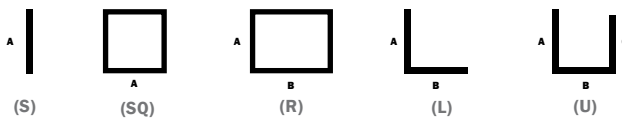
| | | | | |
|---------------------------------------|----------------|-----------------------------|---|---|
| QS LPX Lightplane [†] | QS 4 4" | QS R Recessed Direct | QS MD Mud QS TM [‡] Trim QS T9 TGrid 9/16 QS T5 TGrid 15/16 HF Hidden Flange ST Slot G9 Tegular 9/16 G5 Tegular 15/16 AS ^{‡,‡} Armstrong Techzone® Slot A9 ^{‡,‡} Armstrong Techzone® T-grid 9/16 A5 ^{‡,‡} Armstrong Techzone® T-grid 15/16 AG ^{‡,‡} Armstrong Techzone® Tegular 9/16 AW [‡] Armstrong Woodworks® AM [‡] Armstrong Metalworks® | QS FN Flush Lens RN Regress Lens (3/4") CN ControlRoll Flush Lens [†] <i>Select for Widespread & Asymmetric Optics</i> |
|---------------------------------------|----------------|-----------------------------|---|---|

[†]For install in wood, drywall, metal, etc.
[‡]Fits Armstrong 4" TechZone®
[†]All product and company names are trademarks or registered trademarks of their respective holders. Use of them does not imply any affiliation with or endorsement by them.

| 6. SHAPE/LENGTH* (CHOOSE 1 & ENTER LENGTH IN FEET) - FOR CUSTOM ANGLES, CONTACT ALW | 7. LUMENS* (CHOOSE 1) | 8. CCT (CHOOSE 1) |
|---|-----------------------|-------------------|
|---|-----------------------|-------------------|

| | | |
|--|------------------------|--------------------------------------|
| QS S ___ Individual/Straight Run Section (enter length in product code above, ex. S18) | QS 03 350lm/ft | QS N Choose for RB, RW, or BO |
| QS Q ___ Square Configuration (enter side length A, ex. Q18) | QS 05 500lm/ft | 27 [‡] 2700K |
| QS R ___/___ Rectangular Configuration (enter side lengths A and B, ex. R12/24) | QS 07 750lm/ft | QS 30 3000K |
| QS L ___/___ L-Shaped Configuration (enter side lengths A and B, ex. L12/24) | QS 10 1000lm/ft | QS 35 3500K |
| QS U ___/___/___ U-Shaped Configuration (enter side lengths A, B, and C, ex. U12/12/24) | QS 12 1200lm/ft | QS 40 4000K |

*To qualify for QS, all corners of shape must be 90°, same plane
[†]Lengths greater than 8' consist of multiple individual housing sections joined together. Lengths are nominal and may vary based on lamping and other specification selections. Consult ALW when exact lengths are required.



Shape orientation (Looking from the Ceiling down to the floor).

| | | |
|--|--|--|
| 15 [‡] 1500lm/ft | RB RGB | QS 50 [‡] 5000K |
| RW RGB + 3500K White, 80CRI | BO /____ [‡] BIOS. 80 CRI. Choose your lm/ft | TW [‡] Tunable White, 90CRI, 2700K - 6500K |
| CM /____ [‡] Custom Lumens. Write in your lumens/ft (ex: 0100 = 100lm/ft). | | [‡] 2700K only available in 90CRI [‡] 5000K only available in 80CRI [†] Tunable White (TW) not available with BIOS. BIOS has its own tunable white option to be specified by request. |

[†]For delivered lumens and watts, see 'Performance Details'
[‡]1500lm/ft option only available with Control Roll lenses
[‡]Contact ALW for specific BIOS specifications
[‡]Custom lumens available from 100 - 1500lm/ft

| 9. CRI (CHOOSE 1) | 10. OPTICS* (CHOOSE 1) | 11. DRIVER* (CHOOSE 1) | 12. LUMENS - DOWNLIGHT* (CHOOSE 1) |
|-------------------|------------------------|------------------------|------------------------------------|
|-------------------|------------------------|------------------------|------------------------------------|

| | | | |
|--------------------------------------|---|--|---|
| QS N Choose for RB, RW, or TW | QS SL ¹⁰ Standard Lambertian | QS V00 0-10V, dim to 0% | QS N None. Select when downlight lamping is not desired. |
| QS 80 80 | QS LG ¹⁰ Low Glare | QS V01 0-10V, dim to 1% | DL35 350lm |
| QS 90 90 | CONTROLROLL LENS ONLY | LDE Lutron LDE1 Ecosystem, dim to 1% | DL50 500lm |
| | AL ¹¹ Asymmetric Left (outside of shape) | P01 ¹² ELV/TRIAC phase dim to 1% | DL75 750lm |
| | AR ¹¹ Asymmetric Right (inside of shape) | TSE ¹³ Lutron T-Series Driver | DL10 1000lm |
| | WS Widespread | ELO eldoLED, 0-10V dim to 0% | |
| | [†] See LEED + WELL guide for optic/output combos that fall under standard UGR and intensity levels | DAL DALI, dim to 0% | [†] All downlights will be wired to one circuit |
| | ¹⁰ Regress (RN) lens is only available with Low Glare (LG) and Standard Lambertian (SL) lens types. See page 4 for Optics Compatibility. | DMX ¹⁴ DMX, dim to 0% | ^{††} Downlights are not available in BIOS options as the COB is too large to fit in downlight housing |
| | ¹¹ See page 4 for explanation of Asymmetric lens specification | POE ¹⁵ POE Ready | ^{†††} If Direct linear lamping is not selected, lens will be replace with Aluminum lid between Downlights. |
| | | CM ¹⁶ Custom driver | |



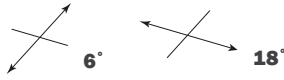

[†]See 'Driver' and lamping charts for driver details
¹²Phase dim drivers are 120 VAC only
¹³For Tunable White (TW) CCT only
¹⁴DMX option is only Declare classified, not Red List Free
¹⁵Contact ALW with the POE spec details
¹⁶Contact ALW for custom driver specifications

QS = QuickShip-qualifying option. For the entire luminaire configuration to be QuickShip-eligible, ALL options specified in the configuration must be ones notated with "QS".
NOTE: Maximum 800 ft. of QuickShip-eligible product per order.

Rev 031225



PRODUCT SPECIFICATION SHEET CONT'D

| 13. CCT - DOWNLIGHT (CHOOSE 1) | 14. CRI - DOWNLIGHT (CHOOSE 1) | 15. OPTICS - DOWNLIGHT (CHOOSE 1) | 16. ACCESSORY - DOWNLIGHT (CHOOSE 1) |
|--|---|---|---|
| QS N None. Select when downlight lamping is not desired. 27 2700K 30 3000K 35 3500K 40 4000K 50 5000K | QS N None. Select when downlight lamping is not desired. 80 80 CRI 90 90 CRI | QS N None. Select when downlight lamping is not desired. 25 25° 40 40°  | QS N (Blank. When selected output is none) HL Honeycomb Louver ST Snoot HS Honeycomb Louver + Snoot  |
| | | PERPENDICULAR PARALLEL HONEYCOMB LOUVER SNOOT | |

| 17. QUANTITY - DOWNLIGHT (CHOOSE 1) | 18. DRIVER - DOWNLIGHT* (CHOOSE 1) | 19. FINISH* (CHOOSE 1) | 20. VOLTAGE (CHOOSE 1) |
|---|---|---|---|
| QS N None. Select when downlight lamping not desired. /__ Type total quantity of downlights per run length in product code on previous page. (Maximum 1x for 2-3ft., 2x for 4-5ft, and 3x for 6-8ft.)Louver + Snoot | QS N None QS V00 0-10V, dim to 0% VS01 0-10V, dim to 1% LDE Lutron LDE1 Ecosystem, dim to 1% P01¹⁷ ELV/TRIAC phase dim to 1% ELO eldoLED, 0-10V dim to 0% DAL DALI, dim to 0% DMX¹⁸ DMX, dim to 0% POE¹⁹ POE Ready CM²⁰ Custom driver <small>*See 'Driver' and lamping charts for driver details ¹⁷Phase dim drivers are 120 VAC only ¹⁸DMX option is only Declare classified, not Red List Free ¹⁹Contact ALW with the POE spec details ²⁰Contact ALW for custom driver specifications</small> | STANDARD FINISHES QS SW <input type="checkbox"/> Satin White QS SB <input type="checkbox"/> Satin Black QS AS <input type="checkbox"/> Aluminum Silver Anodized Effect QS TB <input type="checkbox"/> Textured Black PREMIUM FINISHES -- See chart on page 9 for more standard finishes. Manually type in the finish code (Ex: OB = Oil-Rubbed Bronze) SPECIAL ORDER FINISHES* RAL____ Specify RAL Classic Color (Ex: RAL 3003) CCM____ Specify Catalog Colors Custom Color Match <small>*Manually type in the finish code for special order finishes types</small> | QS UNV Universal Voltage (120VAC-277VAC) 347 347 Volt (<i>Driver options may be limited. Not available with EMB</i>) |

| 21. EMERGENCY CIRCUITS (OPTIONAL) | 22. CONTROL OPTIONS* (OPTIONAL) | 23. ADDITIONAL OPTIONS - A (OPTIONAL) | 24. ADDITIONAL OPTIONS - B* (INCLUDED) |
|--|--|---|---|
| QS N None QS EMB/___²⁴ Emergency power feed whip for connection to remote Generator Transfer Devices (<i>Specify 1x for every 4ft or contact ALW for longer runs</i>) QS EMB/___ 10W Integral Emergency Battery (<i>Specify 1x for every 4ft of emergency lighting</i>) GTD/___ Integral Generator Transfer Device/Switch Bypass - 3A (<i>Specify 1x for every 4ft</i>) ALC/___ Integral Automated Load Control Relay - 10A (<i>Specify 1x for every 4ft or contact ALW for longer runs</i>) <small>²⁴No EM components provided. Choose None when designating entire fixture for EMC. When 4ft EMC sections are chosen, the power whip will be labeled as an EMC whip.</small> | QS N None FACTORY CONTROLS QS OS/PH/INT/___ Integral Occupancy/Daylight sensor QS OS/PH/HV/___ Remote Occupancy/Daylight sensor NETWORK CONTROLS <i>Embedded controls below are placeholder specs. See the ALW Controls Guide to finalize your final control spec.</i> AY/xx Acuity AN/xx Avi-on CA/xx Casambi CW/xx/___ Cooper Wavelinx EC/xx/___ Encelium EN/xx/___ Enlighted LU/xx/___ Lutron NX/xx/___ NX Controls WA/xx/___ Wattstopper <small>*Quickship availability on occupancy and photocell daylight sensors may vary. Contact ALW for more information. Contact ALW for Additional Zone specifications</small> | QS N None QS CP Chicago Plenum | QS DC Living Building Challenge Declared or Red List Approved <small>*See Declare page for LP+ Declare listing</small> |
| | | | 25. QUICKSHIP OPTIONS QS Select if you want your fixture to be QS Note: To be eligible for the Quickship (QS) program, all previous selected options must also be marked QS |

QS = QuickShip-qualifying option. For the entire luminaire configuration to be QuickShip-eligible, ALL options specified in the configuration must be ones notated with "QS".
 NOTE: Maximum 800 ft. of QuickShip-eligible product per order.

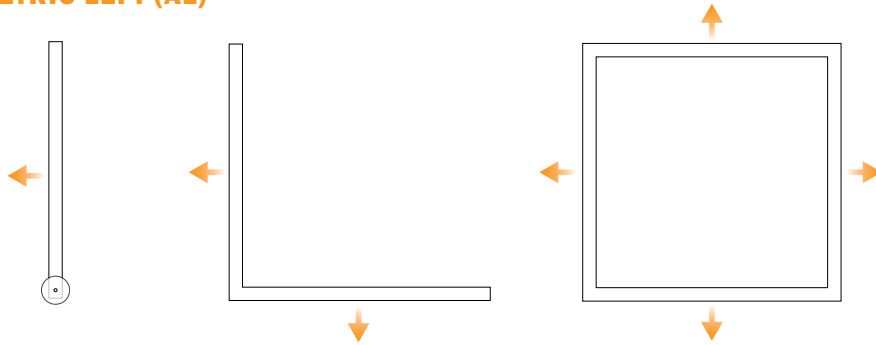
Rev 031225



LENS & OPTICS

| | | OPTICS | | | |
|------------|------------------------|--------------------------|----------------|---------------------|-----------------|
| | | STANDARD LAMBERTIAN (SL) | LOW GLARE (LG) | ASYMMETRIC (AL, AR) | WIDESPREAD (WS) |
| LENS TYPES | FLUSH (FN) | ● | ● | | |
| | CONTROLROLL FLUSH (CN) | ● | ● | ● | ● |
| | REGRESSED (RN) | ● | ● | | |

ASYMMETRIC LEFT (AL)

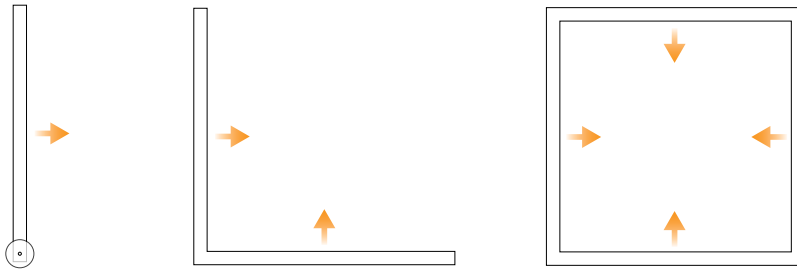


Note: For unique applications, mark up the submittal drawings for desired asymmetric light throw.

Straight Sections
Light is thrown to left of the powerfeed

Shapes
Light is thrown outside the shape

ASYMMETRIC RIGHT (AR)



Straight Sections
Light is thrown to right of the powerfeed

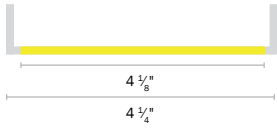
Shapes
Light is thrown inside the shape



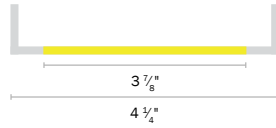
LENS DETAILS

Applicable to all models

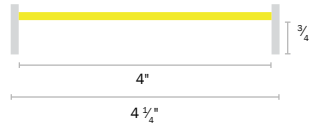
— FIXTURE BODY — LENS



F
FLUSH

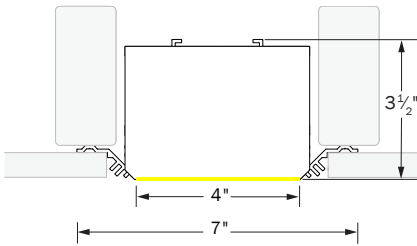


C
CONTROL ROLL FLUSH

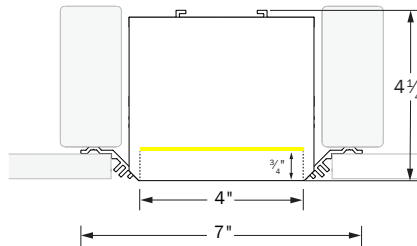


R
REGRESS LENS

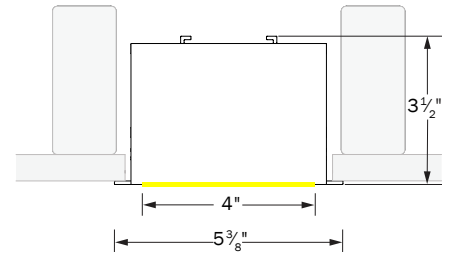
MECHANICAL DIAGRAMS



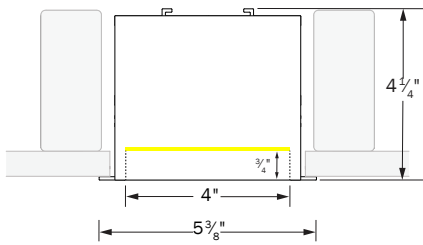
LPX4RMDFN
RECESSED MUD-IN
FLUSH LENS



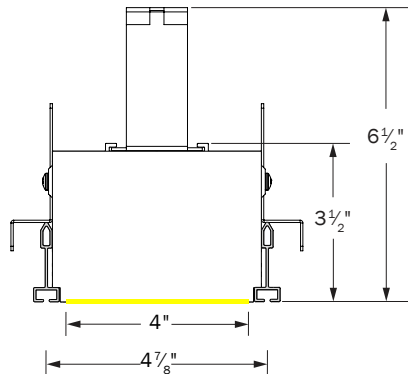
LPX4RMDRN
RECESSED MUD-IN
REGRESSED LENS



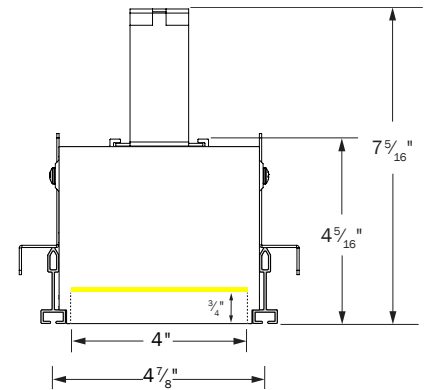
LPX4RTMFN
RECESSED TRIM
FLUSH LENS



LPX4RTMRN
RECESSED TRIM
REGRESSED LENS



LPX4RSTFN
RECESSED SLOT
FLUSH LENS

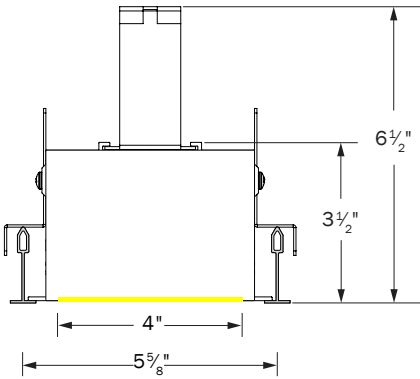


LPX4RSTRN
RECESSED SLOT
REGRESSED LENS

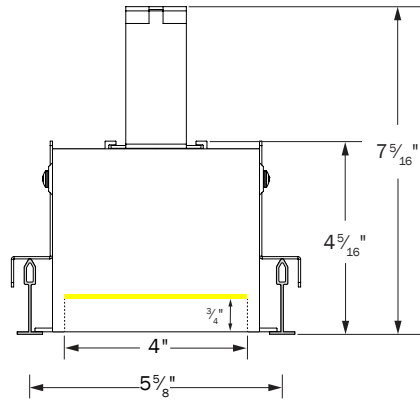
Rev 031225



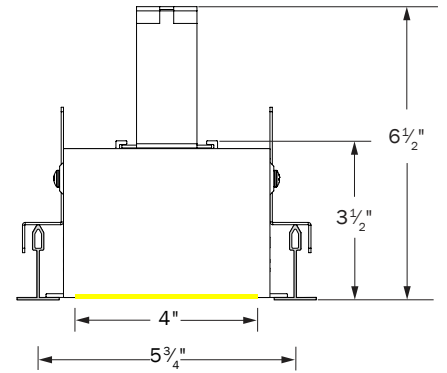
MECHANICAL DIAGRAMS CONT'D



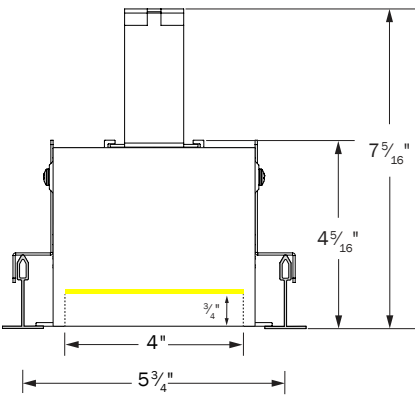
LPX4RT9FN
RECESSED TGRID 9/16
FLUSH LENS



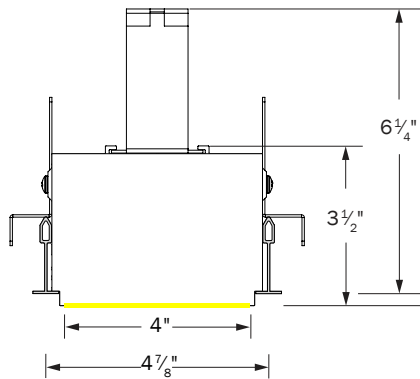
LPXFRT9RN
RECESSED TGRID 9/16
REGRESSED LENS



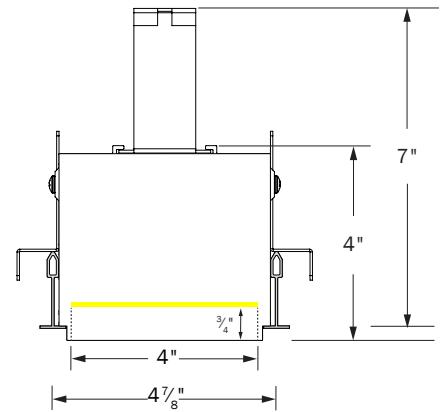
LPX4RT5FN
RECESSED TGRID 15/16
FLUSH LENS



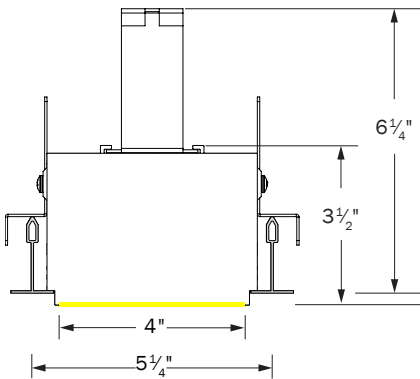
LPX4RT5RN
RECESSED TGRID 15/16
REGRESSED LENS



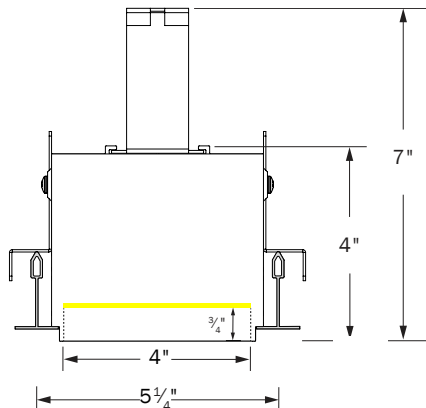
LPX4RG9FN
RECESSED TEGULAR 9/16
FLUSH LENS



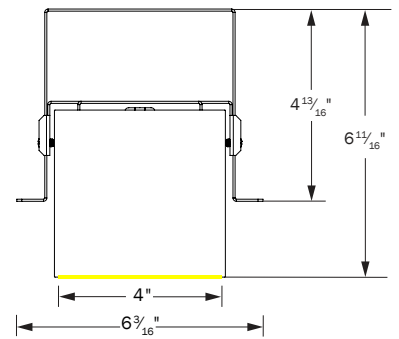
LPX4RG9RN
RECESSED TEGULAR 9/16
REGRESSED LENS



LPX4RG5FN
RECESSED TEGULAR 15/16
FLUSH LENS



LPX4RG5RN
RECESSED TEGULAR 15/16
REGRESSED LENS

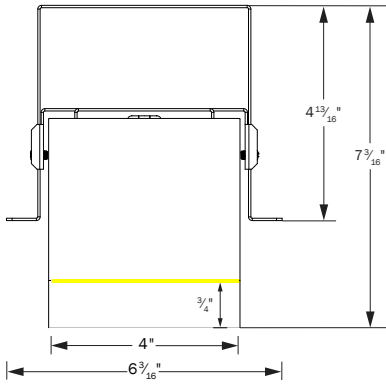


LPX4RHFFN
RECESSED HIDDEN FLANGE
FLUSH LENS

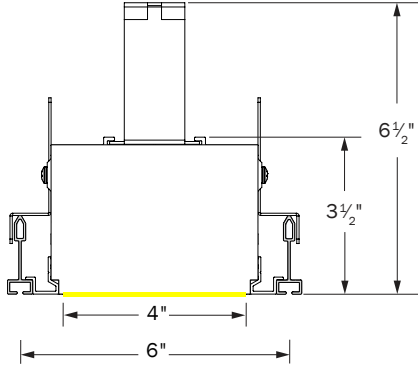
Rev 031225



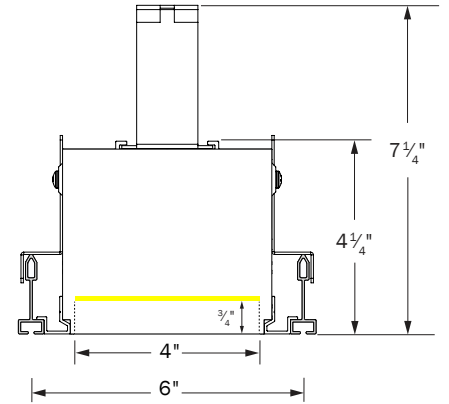
MECHANICAL DIAGRAMS CONT'D



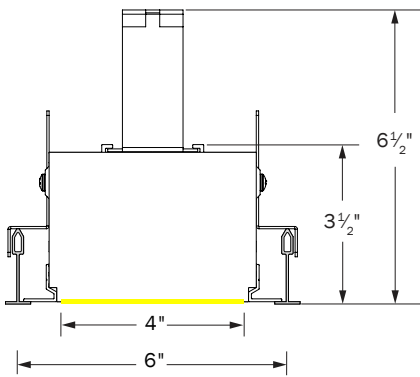
LPX4RHFRN
RECESSED HIDDEN FLANGE
REGRESSED LENS



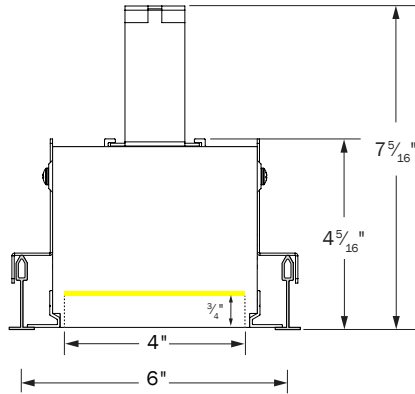
LPX4RASFN
RECESSED SLOT ARMSTRONG
TECHZONE® FLUSH LENS



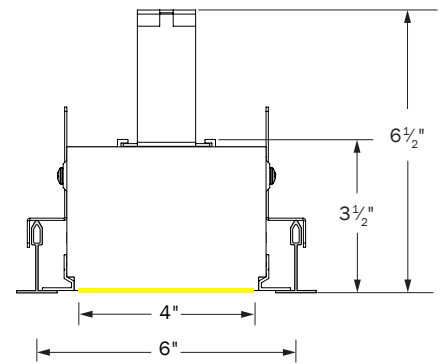
LPX4RASRN
RECESSED SLOT ARMSTRONG
TECHZONE® REGRESSED LENS



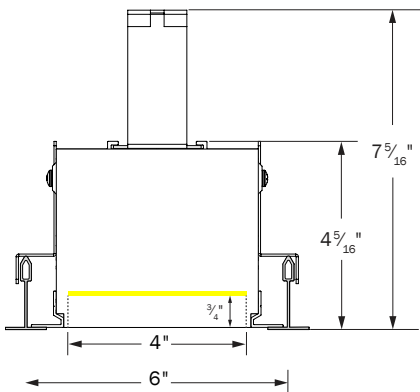
LPX4RAGFN
RECESSED TGRID 9/16
ARMSTRONG TECHZONE®
FLUSH LENS



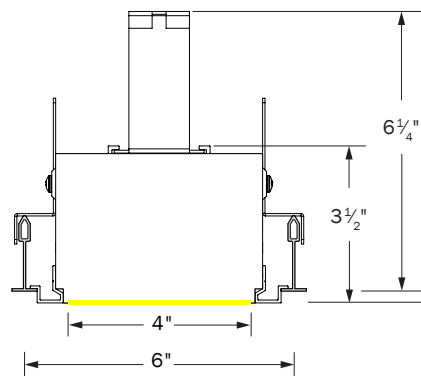
LPX4RA9RN
RECESSED TGRID 9/16
ARMSTRONG TECHZONE®
REGRESSED LENS



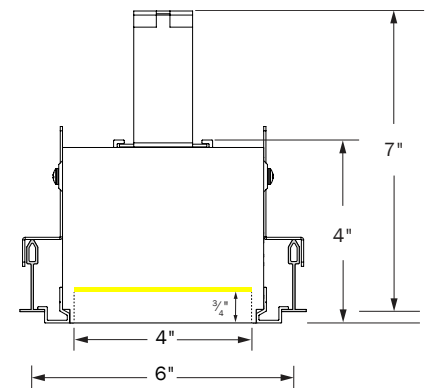
LPX4RA5FN
RECESSED TGRID 15/16
ARMSTRONG TECHZONE®
FLUSH LENS



LPX4RA5RN
RECESSED TGRID 15/16
ARMSTRONG TECHZONE®
REGRESSED LENS



LPX4RAGFN
RECESSED TEGULAR 9/16
ARMSTRONG TECHZONE®
FLUSH LENS

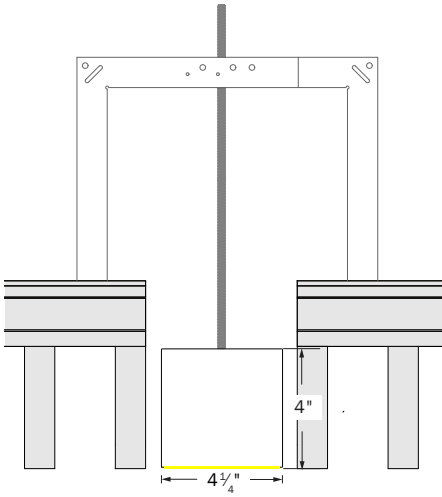


LPX4RAGRN
RECESSED TEGULAR 9/16
ARMSTRONG TECHZONE®
REGRESSED LENS

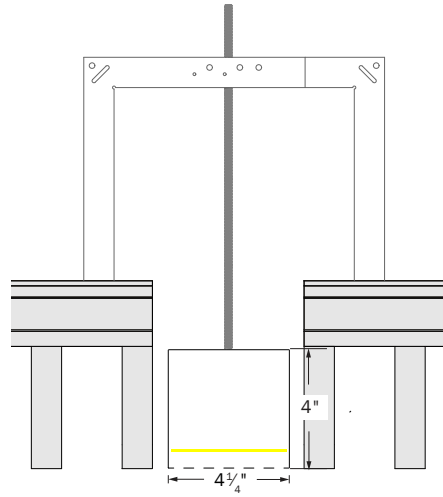
Rev 031225



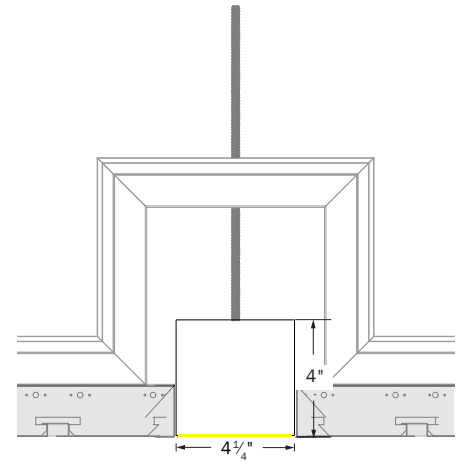
MECHANICAL DIAGRAMS CONT'D



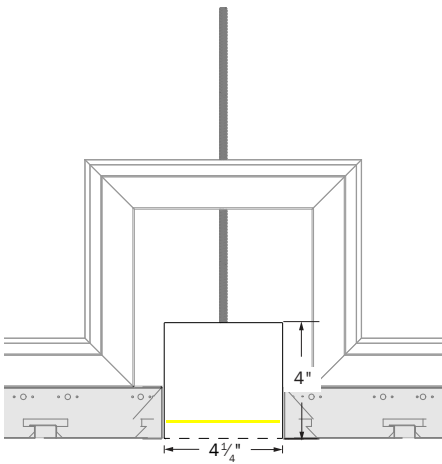
LPX4RAWFN
RECESSED ARMSTRONG
WOODWORKS® FLUSH LENS



LPX4RAWRN
RECESSED ARMSTRONG
WOODWORKS® REGRESSED LENS



LPX4RAMFN
RECESSED ARMSTRONG
METALWORKS® FLUSH LENS



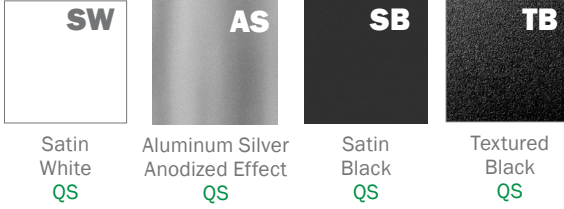
LPX4RAMRN
RECESSED ARMSTRONG
METALWORKS® REGRESSED LENS



STANDARD FINISHES

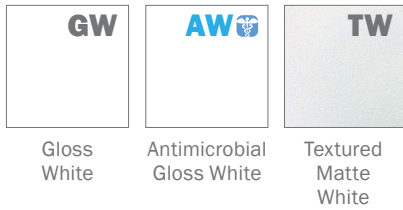
Standard finishes are available at no additional charge.

STANDARD FINISHES - QS ELIGIBLE

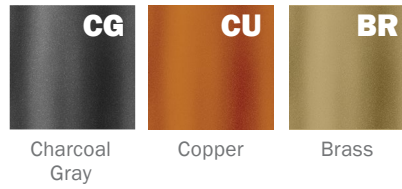


PREMIUM FINISHES

BASIC POWDER COAT



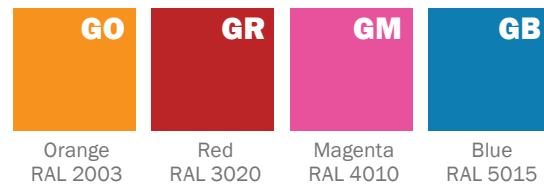
METALLIC POWDER COAT



SATIN ANODIZED EFFECT POWDER COAT



GLOSS POWDER COAT (80-95% GLOSS)



Contact ALW Quotes for sample paint finish swatches.

SPECIAL ORDER FINISHES*



RAL CLASSIC COLORS (80-95% GLOSS): RAL_ _ _ _

Most RAL Classic Colors are available for a minimum setup fee. On your specification submittal choose your RAL color by entering the 4-digit RAL code (Ex: RAL 3003). See www.alw-inc.com/resources/finishes



CUSTOM COLOR MATCH: CCM_ _ _ _

Custom powder coat color matching is available for a premium setup fee. Consult ALW for additional information.

*An individual setup fee will apply to each unique Special Order Finish per purchase order. (ex: RAL 5023 and RAL 2008 are specified for multiple line items on a purchase order. 2x setup fees will apply)

*Printed or on-screen colors are only approximations - consult actual Color Chip Set before specifying



PERFORMANCE DETAILS - STANDARD LENSES

| OUTPUT OPTION | OPTIC TYPE | DELIVERED LUMENS/FT | EFFICACY (LM/W) | WATTS/FT ²² | CRI OPTIONS | CCT OPTIONS |
|--------------------------|-----------------|---------------------|-----------------|------------------------|-------------|---|
| 03²³ | SL | 364 | 121 | 3 | 80+ 90+ | 2700K 3000K 3500K 4000K 5000K |
| | LG | 463 | 154 | | | |
| | SL (Regress) | 390 | 130 | | | |
| | LG (Regress) | 373 | 124 | | | |
| 05²³ | SL | 519 | 119 | 4.4 | | |
| | LG | 659 | 152 | | | |
| | SL (Regress) | 555 | 128 | | | |
| | LG (Regress) | 530 | 122 | | | |
| 07²³ | SL | 776 | 117 | 6.3 | | |
| | LG | 985 | 157 | | | |
| | SL (Regress) | 830 | 132 | | | |
| | LG (Regress) | 793 | 127 | | | |
| 10²³ | SL | 1024 | 114 | 9 | | |
| | LG | 1300 | 144 | | | |
| | SL (Regress) | 1095 | 122 | | | |
| | LG (Regress) | 1047 | 116 | | | |
| 12²³ | SL | 1223 | 111 | 11 | | |
| | LG | 1553 | 142 | | | |
| | SL (Regress) | 1309 | 119 | | | |
| | LG (Regress) | 1250 | 114 | | | |
| TUNE | SL (Warm White) | 921 | 65 | 14.2 | 90 | 2700K - 6500K |
| | SL (Cool White) | 977 | 69 | | | |
| RGB²⁴ | SL | 184 | 39 | 4.7 | N/A | |
| RGBW²⁴ | SL | W: 177 RGB: 184 | 53 | 6.8 | W: 80 CRI | W: 3500K |

²² Lumens/Watt and Watts/ft have been calculated assuming a driver efficiency of 85%. Depending on field conditions, actual measured values may fluctuate by 5-8%.

²³ Performance calculations are based on LM-79 test of 1200lm output at 80 CRI and 3500K. All other output calculations are extrapolated values.

²⁴ Performance calculations are derived from LM-79 test with all RGB LEDs illuminated (Red, Green, Blue) and White LED only illuminated



PERFORMANCE DETAILS - CONTROLROLL

| OUTPUT OPTION | OPTIC TYPE | DELIVERED LUMENS/FT | EFFICACY (LM/W) | WATTS/FT ²⁵ | CRI OPTIONS | CCT OPTIONS |
|--------------------------|-----------------|---------------------|-----------------|------------------------|-------------|---|
| 03²⁶ | SL | 373 | 151 | 2.5 | 80+ 90+ | 2700K 3000K 3500K 4000K 5000K |
| | WS | 420 | 170 | | | |
| | AL | 423 | 171 | | | |
| | LG | 419 | 170 | | | |
| 05²⁶ | SL | 512 | 150 | 3.4 | | |
| | WS | 577 | 169 | | | |
| | AL | 582 | 170 | | | |
| | LG | 576 | 168 | | | |
| 07²⁶ | SL | 759 | 148 | 5.1 | | |
| | WS | 855 | 167 | | | |
| | AL | 862 | 168 | | | |
| | LG | 853 | 166 | | | |
| 10²⁶ | SL | 1025 | 146 | 7 | | |
| | WS | 1155 | 164 | | | |
| | AL | 1165 | 166 | | | |
| | LG | 1153 | 164 | | | |
| 12²⁶ | SL | 1207 | 144 | 8.4 | | |
| | WS | 1360 | 163 | | | |
| | AL | 1371 | 164 | | | |
| | LG | 1356 | 162 | | | |
| 15²⁶ | SL | 1533 | 142 | 10.8 | | |
| | WS | 1727 | 159 | | | |
| | AL | 1741 | 161 | | | |
| | LG | 1723 | 159 | | | |
| TUNE | SL (Warm White) | 1154 | 81 | 14.2 | 90 | 2700K - 6500K |
| | SL (Cool White) | 1224 | 86 | | | |
| RGB²⁷ | SL | 231 | 49 | 4.7 | N/A | |
| RGBW²⁷ | SL | 231 | 34 | 6.8 | W: 80 CRI | W: 3500K |

²⁵Lumens/Watt and Watts/ft have been calculated assuming a driver efficiency of 85%. Depending on field conditions, actual measured values may fluctuate by 5-8%.

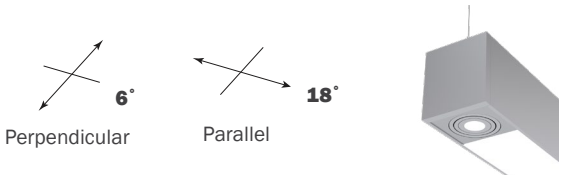
²⁶Performance calculations are based on LM-79 test of 600lm output at 80 CRI and 3500K. All other output calculations are extrapolated values.

²⁷Performance calculations are derived from LM-79 test with all RGB LEDs illuminated (Red, Green, Blue) and White LED only illuminated



PERFORMANCE DETAILS - ACCENT/DOWNLIGHT LAMPING

| SPOT | DELIVERED LUMENS (LM) | WATTS (W) | EFFICACY (LM/W) | CRI | CCT OPTIONS | BEAM SPREAD OPTIONS (DEGREES) |
|------|-----------------------|-----------|-----------------|----------|----------------------------------|-------------------------------|
| DL35 | 350 | 3.8 | 92 | 80 90 | 2700K 3000K 3500K 4000K | 25 40 |
| DL50 | 500 | 4.3 | 116 | | | |
| DL75 | 750 | 5.3 | 142 | | | |
| DL10 | 1000 | 6.5 | 154 | | | |



TM-30-18 DETAILS (90 CRI LAMPING)

| CCT | CRI (Ra) | CRI (R9) | TM-30 Rf | TM-30 Rg | Duv |
|-------|----------|----------|----------|----------|---------|
| 2700K | 94 | 56 | 92 | 100 | -0.0009 |
| 3000K | 94 | 59 | 92 | 100 | -0.0013 |
| 3500K | 94 | 64 | 92 | 100 | -0.0005 |
| 4000K | 94 | 66 | 92 | 100 | -0.0004 |



DRIVERS

| PRODUCT CODE | DESCRIPTION |
|--------------|---|
| V00 | 0-10V dimming down to 1% with electronic dim-to-off (0%). |
| V01 | 0-10V dimming down to 1%. |
| LDE | Lutron Hi-Lume (LDE1) 1% EcoSystem LED driver with Soft-on, Fade-to-Black dimming technology. |
| P01 | TRIAC Forward Phase 2-Wire and ELV Reverse Phase 3-Wire hybrid LED driver. Dimming down to 1%. 120VAC only. |
| ELO | EldoLED 0-10V SOLODrive 0.1% dimming with electronic dim-to-off (0%). |
| TSE | Lutron T-Series (PSQ0) 1% 2-channel tunable white driver (For use with Lutron Quantum Control Systems). |
| DAL | DALI flicker-free dimming down to 1% with electronic dim-to-off (0%). |
| DMX | DMX flicker-free dimming down to 0%. |
| POE/READY | Specify a PoE driver of your choice. Fixture supplied with low voltage leads and no LED driver. Contact ALW to register your project. |

* Most drivers can be programmed to specific dimming levels if desired. Contact ALW for specific dimming level requests. ALW lighting fixtures are intended for use with a wide range of sensors, lighting controls, LED drivers, and building management systems. If there are specific components required for your application that aren't listed on this spec sheet, please contact ALW customer support to specify a compatible solution of your choice.

| DRIVER/LED LAMPING COMPATIBILITY | | | | | | |
|----------------------------------|-------------|----------|-------|-------------|------------------------------------|---|
| | STD | STD/BIOS | TUNE* | RGB OR RGBW | CA TITLE 24 JA8/JA10 ²⁸ | IEEE P1789 & HD TV STUDIO ²⁹ |
| V00 | ● | ● | ● | | ● | |
| V01 | ● | ● | ● | | ● | |
| LDE | ● | ● | | | ● | ● |
| P01 | ● | ● | | | ● | |
| ELO | ● | ● | ● | | ● | ● |
| TSE | | | ● | | ● | ● |
| DALI | ● | ● | ● | | ● | |
| DMX | ● | ● | ● | ● | PER REQUEST | PER REQUEST |
| POE/READY | PER REQUEST | | | | | |

● - Indicates compatibility

* Standard lamping (STD) - 350 - 1500 lm/ft

²⁸ Fixtures specified with 90CRI 2700K, 3000K, 3500K, 4000K, and 5000K lamping with applicable LED drivers have the ability to conform to California Title 24 JA8 and JA10 Appendices

²⁹ The following drivers conform to IEEE P1789 Flicker Standard: 'IEEE Recommended Practices for Modulating Current in High-Brightness LEDs for Mitigating Health Risks to Viewers'. These drivers may also be installed in HD TV Studio applications utilizing high frequency camera equipment.

* ELO with TUNE Lamping will include an EldoLED DUALDrive 0-10V Tunable White LED Driver.



PHOTOMETRICS - STANDARD LENSES

| OPTIC | POLAR PLOT (CD) | MTG HEIGHT | LIGHT LEVEL (FC) | SPACING CRITERION (SC) ³⁰ (0° - 180°) (90° - 270°) | MAX INTENSITY (CD) | OUTPUT (LM/FT) |
|-------|-----------------|------------|------------------|---|--------------------|----------------|
| LG | | 6 ft | 17.4 | 1.24 1.20 | 605.8 | 1553 |
| | | 8 ft | 9.8 | | | |
| | | 10 ft | 6.3 | | | |
| | | 12 ft | 4.4 | | | |
| | | 14 ft | 3.2 | | | |
| | | 16 ft | 2.5 | | | |
| SL | | 6 ft | 11.7 | 1.26 1.28 | 419.8 | 1223 |
| | | 8 ft | 6.6 | | | |
| | | 10 ft | 4.2 | | | |
| | | 12 ft | 2.9 | | | |
| | | 14 ft | 2.1 | | | |
| | | 16 ft | 1.6 | | | |

*Photometric calculations based on 1200lm 3500K 80 CRI fixture combination. Actual results may vary in the field.

For footcandle and output multipliers refer to the [ALW LightPlane+ IES File Multipliers Chart](#)

³⁰Spacing criterion refers to maximum distance luminaires can be spaced to provide uniform illumination on the working plane or surface.

Luminaire spacing = Spacing Criterion (SC) x Mounting Height (MH) (ex. 1.14 (SC) x 10' (MH) = 11.4' Luminaire Spacing).



PHOTOMETRICS - CONTROLROLL

| OPTIC | POLAR PLOT (CD) | MTG HEIGHT | LIGHT LEVEL (FC) | SPACING CRITERION (SC) ³¹ (0°- 180°) (90°- 270°) | MAX INTENSITY (CD) | OUTPUT (LM/FT) |
|-------|-----------------|------------|------------------|---|--------------------|----------------|
| AL | | 6 ft | 18.1 | 1.2 1.48 | 873.3 | 1741 |
| | | 8 ft | 10.2 | | | |
| | | 10 ft | 6.5 | | | |
| | | 12 ft | 4.5 | | | |
| | | 14 ft | 3.3 | | | |
| | | 16 ft | 2.5 | | | |
| WS | | 6 ft | 15.7 | 1.44 1.2 | 567.8 | 1727 |
| | | 8 ft | 8.8 | | | |
| | | 10 ft | 5.7 | | | |
| | | 12 ft | 3.9 | | | |
| | | 14 ft | 2.9 | | | |
| | | 16 ft | 2.2 | | | |
| LG | | 6 ft | 22.3 | 1.14 1.14 | 801.4 | 1723 |
| | | 8 ft | 12.5 | | | |
| | | 10 ft | 8 | | | |
| | | 12 ft | 5.6 | | | |
| | | 14 ft | 4.1 | | | |
| | | 16 ft | 3.1 | | | |
| SL | | 6 ft | 15.6 | 1.24 1.22 | 563.3 | 1533 |
| | | 8 ft | 8.8 | | | |
| | | 10 ft | 5.6 | | | |
| | | 12 ft | 3.9 | | | |
| | | 14 ft | 2.9 | | | |
| | | 16 ft | 2.2 | | | |

*Photometric calculations based on 1ft length, 1500lm, 3500K, 80 CRI fixture combination. Actual results may vary in the field.

For footcandle and output multipliers refer to the [ALW LightPlane+ IES File Multipliers Chart](#)

³¹Spacing criterion refers to maximum distance luminaires can be spaced to provide uniform illumination on the working plane or surface.
Luminaire spacing = Spacing Criterion (SC) x Mounting Height (MH) (ex. 1.14 (SC) x 10' (MH) = 11.4' Luminaire Spacing).



ADDITIONAL OPTIONS & SPECIFICATIONS

LED PERFORMANCE

80 CRI | L70 Calculated Hours: 180,000hrs
L80 Calculated Hours: 119,000hrs

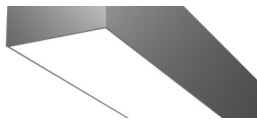
90 CRI | L70 Calculated Hours: 171,000hrs
L80 Calculated Hours: 108,000hrs

HOUSING

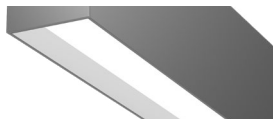
100% recyclable, extruded architectural grade 6063 aluminum with a 0.09" minimum wall thickness.

LENS & OPTICS

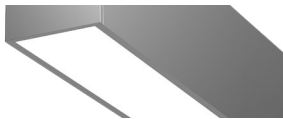
ALW offers three different lens types: Flush, ControlRoll Flush, and Regressed. A wide range of optics are available including, Lamberian, Asymmetric ControlRoll, Low Glare, and Widespread ControlRoll. See page 4 for the Lens & Optics Compatibility chart.



FN
STANDARD FLUSH



RN
REGRESSED



CN
CONTROLROLL FLUSH

The optically engineered ControlRoll lens provides smooth, uniform, and seamless illumination for linear lengths of 250' to eliminated lens gaps. ControlRoll lens rolls out and presses into the housing channel for easy installation.



SAFETY & REGULATORY

ETL Listed (U.S. & Canada). Suitable for dry or damp locations.
For integral driver, Conforms to UL std. 1598 luminaires,
For remote driver, Conforms to UL std. 2018 luminaires.
Certified to CSA std. C22.2#250.0:2008 Ed. 3+G1;G2.

Fixtures specified with 90CRI, 2700K, 3000K, 3500K, and 4000K lamping with applicable LED drivers have the ability to conform to **California Title 24 JAS and JA10** Appendices. EldoLED and Lutron conform to IEEE P1789 Flicker Standard: 'IEEE Recommended Practices for Modulating Current in High-Brightness LEDs for Mitigating Health Risks to Viewers.

DECLARE

All LightPlane+ models are Declared and Red List Approved. Declare Label is a comprehensive product transparency platform designed to empower manufacturers, designers, and consumers with detailed information about the ingredients and environmental impact of building products. Managed by the International Living Future Institute (ILFI), the platform provides a standardized "nutrition label" for products, disclosing material content, sourcing details, and the end-of-life potential. This initiative supports the Living Building Challenge by promoting sustainable and healthy materials, facilitating informed choices in the architecture and construction industries, and fostering transparency and accountability in the manufacturing process

OPERATING TEMPERATURE

Luminaire should be installed and operated **ONLY** in dry environments where the ambient temperature ranges from -4°F to 122°F (-20°C to 50°C). Luminaire operation in environments outside the listed temperature range voids the warranty **AND** may damage the product or adversely impact lamp life, lumen output and color consistency.

WEIGHT

Approximately 3lbs. per linear foot. Weight may vary depending on additional options selected.

EMERGENCY OPTIONS

Emergency options are available for various applications including 10W Emergency Batteries (EMB), EMC circuits (EMC), Generator Transfer Devices (GTD), and Automated Load Control Relays (ALC). Contact ALW for emergency component spec sheets.

EMBEDDED CONTROLS, SENSORS, & OEM COMPONENTS

ALW lighting fixtures are intended for use with a wide range of embedded OEM components (control devices, occupancy and photocell sensors, LED drivers) for use with specified building management systems. Our component portfolio is continually expanding to adopt to the latest technologies and specification needs.

ALW is your embedded controls partner, supporting integration with Acuity, Avi-on, Casambi, Cooper Wavelinx, Encelium, Enlighted, Lutron, NX Controls, Wattstopper, eldoLED, Philips, Molex PoE, NuLEDs PoE, WTEC Smartengine PoE, and more. If there's a component or system required that you don't see on the spec sheet please contact [ALW customer support](#) today so we can review your requirements.

Rev 031225